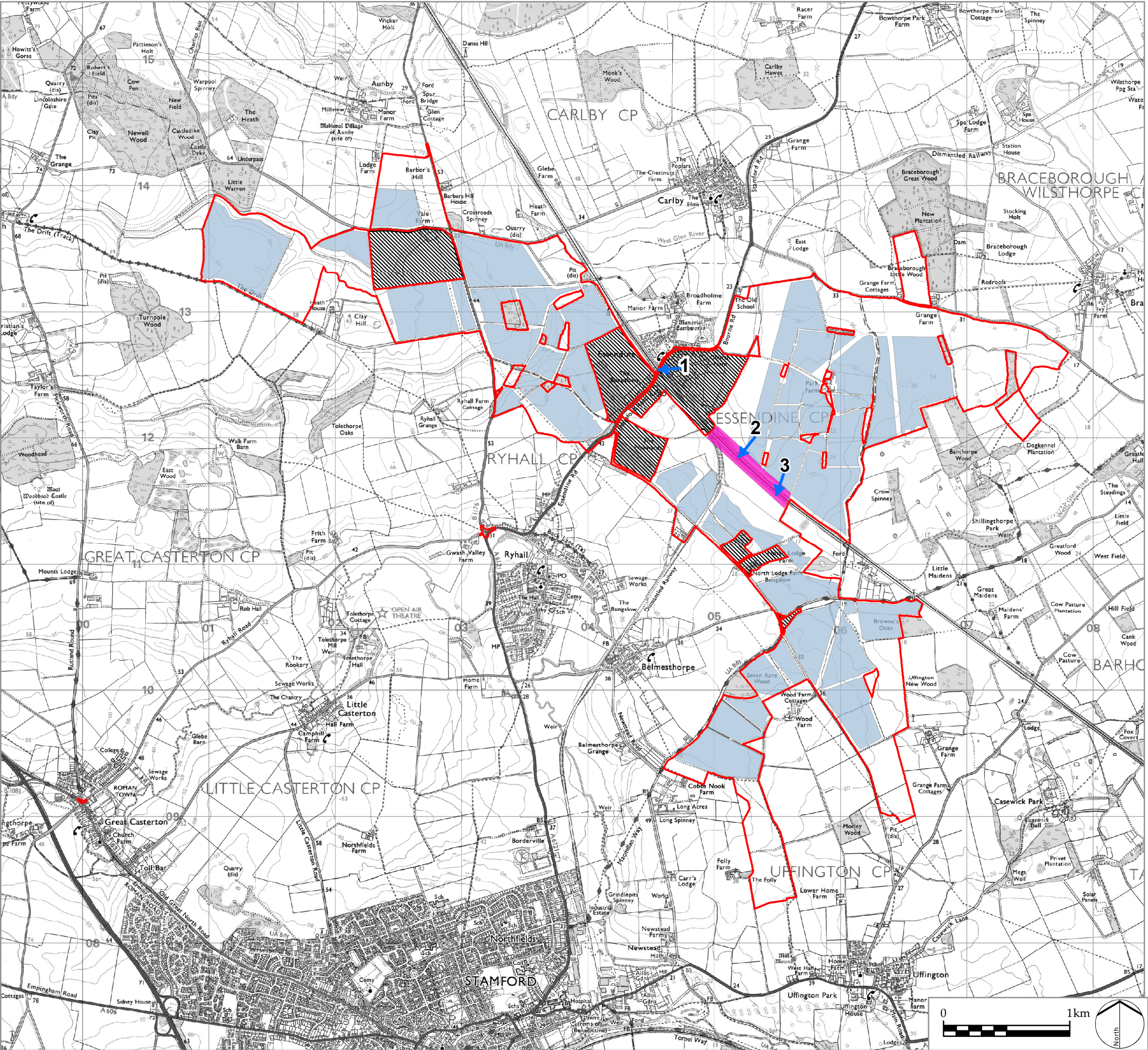







Z:\7863 NSIP SOLAR FARM - CONFIDENTIAL\8GIS\PROJECTS\IES FIGURES\7863\_SK\_615 CABLE CROSSING OF ECM.MXD



Infrastructure Planning (Applications:  
Prescribed Forms and Procedure) Regulations 2009  
APFP Regulation: 5(2)(a)

PINS REFERENCE NUMBER  
EN010127

LEGEND

-  Order limits
-  Solar PV Site
-  Zone for Horizontal Directional Drilling
-  Areas outside the Order limits
-  Cable Crossing Locations

Locations of Potential Railway Cable Crossings:

- 1 Road Bridge through Essendine
- 2 Existing culverts/arches
- 3 Horizontal Directional Drilling

P0 DCO Submission  
REV. DESCRIPTION

RP 06/11/22  
APP. DATE



PROJECT TITLE

MALLARD PASS SOLAR FARM

DRAWING TITLE

Figure 5.8: Cable Crossing Options of the East  
Coast Mainline Railway

ISSUED BY	Oxford	T: 01865 887050
DATE	Nov 2022	DRAWN AG
SCALE @A3	1:30,000	CHECKED PD
STATUS	Final	APPROVED RP

DWG. NO. 7863\_SK\_615 REV: P0

No dimensions are to be scaled from this drawing.  
All dimensions are to be checked on site.  
Area measurements for indicative purposes only.

© LDA Design Consulting Ltd. Quality Assured to BS EN ISO 9001 : 2015

Sources: Ordnance Survey